



3 Beverley House Beverley Court, York

£495,000

A quite stunning two bedroom, three bathroom duplex apartment with allocated parking within this transformation of a grand Victorian villa presenting 21 luxury apartments set within this prime location, on the doorstep of Homestead Park, Clifton Green and the city centre.

BEVERLEY COURT

Beverley Court is an exciting new residential development of a well-known York building located on Shipton Road. Just one mile from the centre of York and overlooking Homestead Park, Beverley Court offers a stunning location for modern living. The original Beverley House was built in the late 19th century and served as the family home for the general manager of the Rowntree's factory. Over the years, it also housed the offices for the Joseph Rowntree Trust and the Local Government Ombudsman.

The Beverley Court development pays homage to its rich local history and the pioneering Rowntree family, by retaining the historic name of Beverley House and naming the three new buildings Appleton House, Seebohm Lodge and Homestead View.

The development is an exemplary project, blending the fully modernised grand Victorian villa with the fabulous bespoke new build homes.

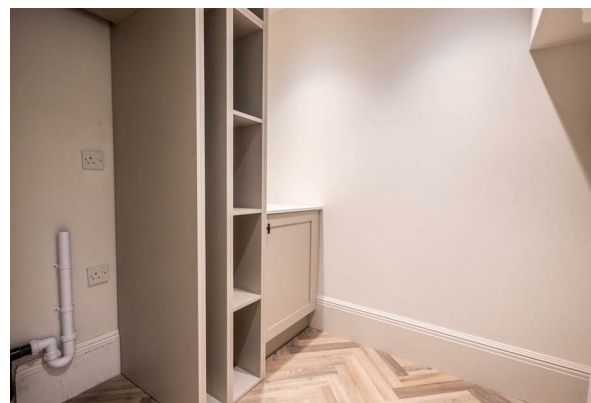
Energy efficient

Beverley Court has a B-rated Energy Performance Certificate (EPC) and photovoltaic solar panels have been installed on the roofs of the new buildings to provide electricity for the communal areas.

Beverley House

The original Beverley House has been regenerated to its former glory as an impressive Victorian villa. It is the centrepiece of the majestic Beverley Court development.

Nine apartments are available across four floors in Beverley House, including two superb penthouses and three 2-bed duplex apartments.



High Specification

With generous ceiling heights and large windows, the apartments across Beverley Court are spacious, modern and filled with lots of natural light. Bathrooms and kitchens are finished to a high standard of luxury specification and quality flooring finishes run throughout.

Kitchens

- Sheraton shaker style cabinets in Beverley House with antique brass handles and slab style cabinets (no handles) in the new builds. Both styles in a limestone colour.
- Quartz worktops and upstands in Vienna Gold.
- Neff induction hobs with Neff standard ovens and separate microwaves or combi ovens and Bosch fridge freezer and dishwasher.
- Gunmetal 4-in-1 hot water tap and gunmetal undermount 1.5 bowl sink.
- Separate utility.

Bathrooms/en-suites/cloakrooms

- Villeroy & Boch sanitaryware with vanity units.
- Feature baths with integrated hand showers.
- Feature glass shower enclosures.
- Hansgrohe chrome taps and shower heads.
- Heated chrome towel rails.
- Shaver points.
- Ceramic stone-coloured tiles on walls, with decorative highlights.
- Motion sensor night lights in en- suites.
- Underfloor heating in bathrooms and ensuites.

General

- Gas central heating with A-rated boilers/combi boilers with underfloor heating and radiators (Beverley House).
- Traditional style internal doors, door frames and skirtings for Beverley House. Contemporary style internal doors, door frames and skirtings for new builds.
- Hampstead Thea door handles in antique bronze finish.
- Switches and sockets in satin brass finish
- Combination of LED downlights and pendant lighting.
- Video door entry system.
- IGBYTE superfast broadband.

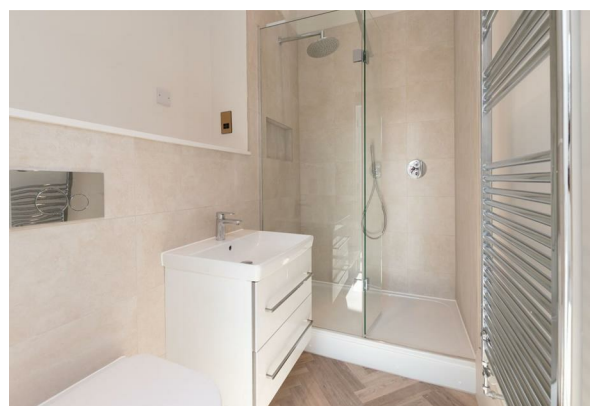
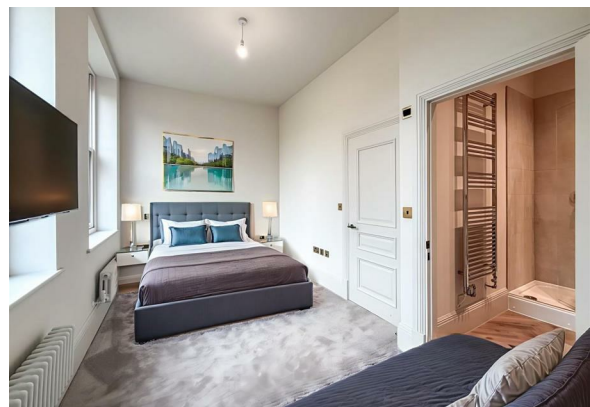
Floor finishes

- Camaro naked blonde oak LVT flooring in herringbone pattern in hallways, open plan living rooms, utilities, cloakrooms, main bathrooms and en-suites.
- Ivory carpet in bedrooms and separate lounges.

Agents Note

Furniture styling is produced by CGI for marketing purposes.

The specifications contained in this brochure are intended to provide an accurate and comprehensive description of the features and finishes of Beverley House and the new build properties. However, all details, including but not limited to measurements, materials, layouts, and finishes, are provided for illustrative purposes only and may be subject to change. The developer reserves the right to make alterations to the specifications without prior notice. Any images, including computer-generated images (CGIs), floor plans, and descriptions of materials and finishes, are indicative only and may not accurately reflect the final construction, fittings, or landscaping. It is recommended that potential purchasers consult with the sales team and review the latest plans and specifications prior to making any purchasing decisions.



Apartment 3

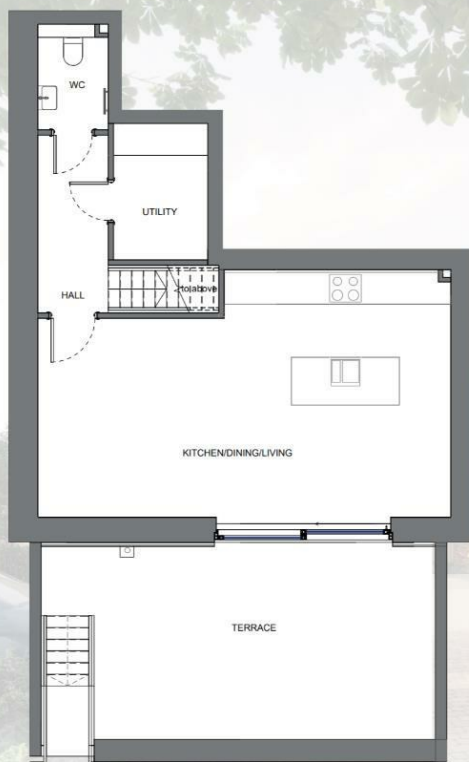
Key Plan



Total gross internal area:
87m² (936ft²)

Lower Ground Floor

Gross internal area:
39m² (420ft²)



Ground Floor

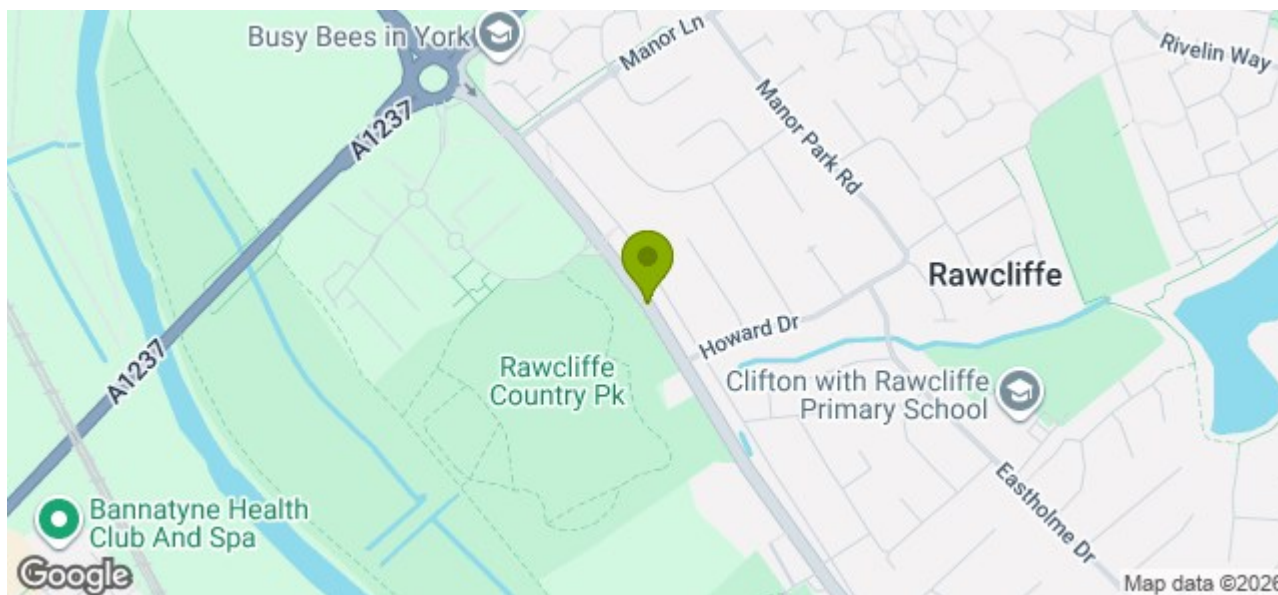
Gross internal area:
48m² (516ft²)




**BEVERLEY
HOUSE**



The specifications contained on this plan is intended to provide an accurate and comprehensive description. However, measurements and layouts may be subject to change. The developer reserves the right to make alterations to the specifications without prior notice.



Stephensons

York	01904 625533
Knaresborough	01423 867700
Selby	01757 706707
Boroughbridge	01423 324324
Easingwold	01347 821145
York Auction Centre	01904 489731
Haxby	01904 809900

Partners

J F Stephenson MA (cantab) FRICS FAAV
 I E Reynolds BSc (Est Man) FRICS
 R E F Stephenson BSc (Est Man) MRICS FAAV
 N J C Kay BA (Hons) pg dip MRICS
 O J Newby MNAEA
 J E Reynolds BA (Hons) MRICS
 R L Cordingley BSc FRICS FAAV
 J C Drewniak BA (Hons)

Associates

N Lawrence

